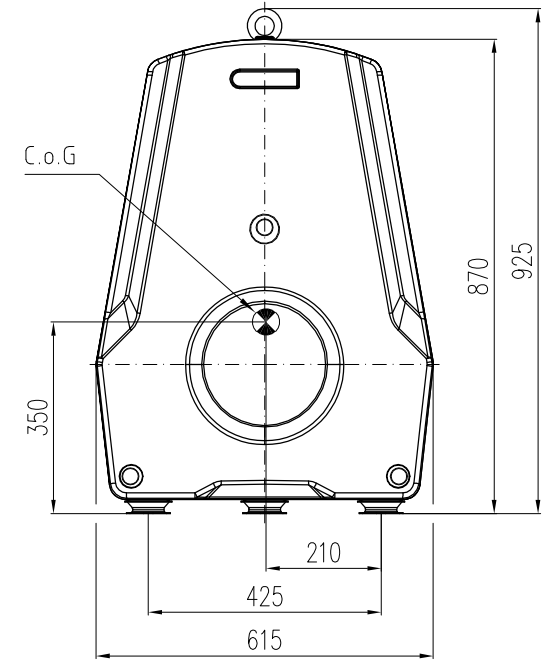
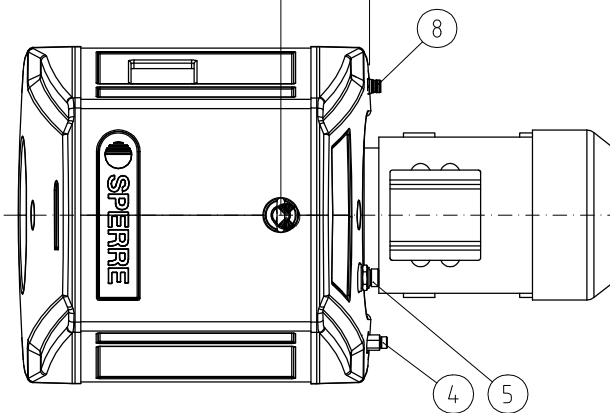
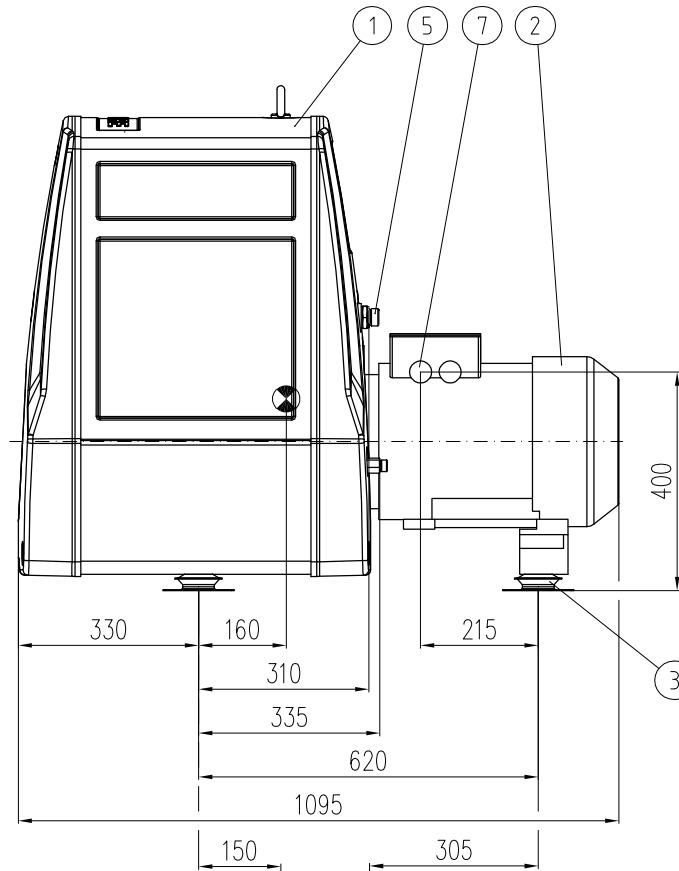
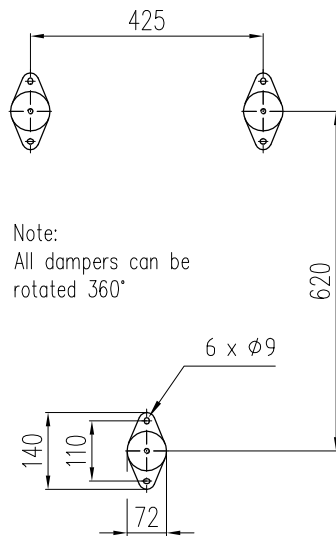


Footprint



Maintenance space all sides of compressor.: Approx. 600 mm

8	1	Plug & Go connection	
7	1	Cable entry	
6	1	Lifting point	
5	1	Air outlet H.P.	3/4" BSP
4	1	Valve, H.P. drain	1/2" BSP
3	3	Vibration dampers	
2	1	Electrical motor	
1	1	Air Compressor	XA045

Pos	Qty	Description	Remarks

Cad system:	Scale:	Format:	Rev.index	GENERAL ARRANGEMENT Air-Cooled Air Compressor XA045
AutoCad	1:10	A3	No. Date	
Drawn	01.12.09	RD		
Approved				
 Sperre Industri AS N-6057 Ellingsøy, Norway				Former dwg.: New dwg.:
				Drawing no. GXA045
				Revision

This drawing is the property of Sperre Industri AS
 and can not be made public, copied or
 otherwise used without our written consent.